



Advanced Dashboard Layouts Content Block Guide

Block Version: 2.0.0

Minimum Genesis Version: 2.0.0

Minimum Platform Version: 9.0.0

Jump to [Release Notes](#)

Copyright © 2026 OneStream Software LLC. All rights reserved.

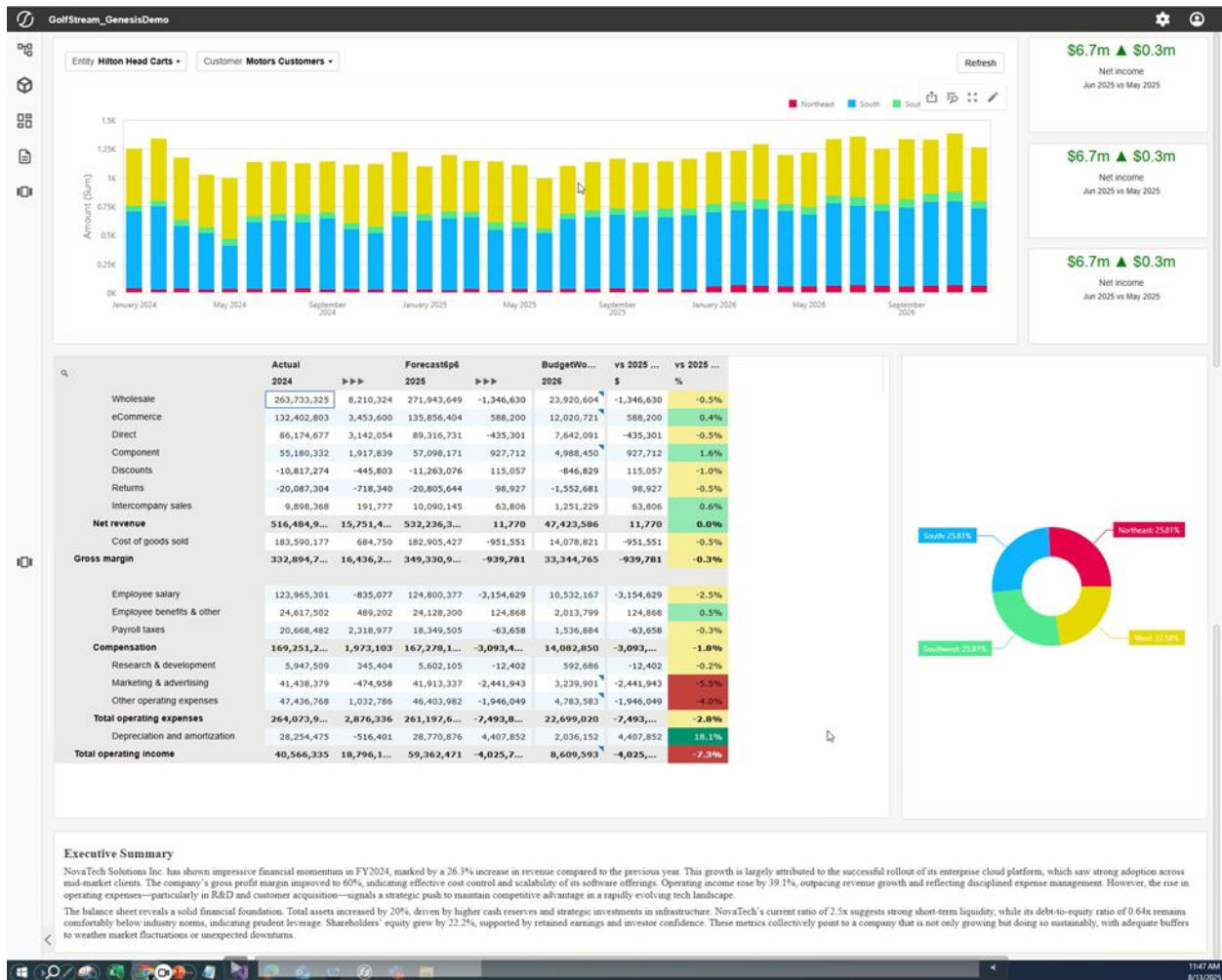
All trademarks, logos, and brand names used on this website are the property of their respective owners. This document and its contents are the exclusive property of OneStream Software LLC and are protected under international intellectual property laws. Any reproduction, modification, distribution or public display of this documentation, in whole or part, without written prior consent from OneStream Software LLC is strictly prohibited.

Table of Contents

- Overview 3
- Designer Page (Configuration)..... 4
 - Toolbar & Settings 4
 - Row and Card Management 5
- Release Notes..... 7
 - Version 2.0.0..... 7
 - Version 1.1.0..... 9
 - Version 1.0.0..... 9

Overview

The Genesis Advanced Dashboard Layouts Block enables you to organize cards filled with embedded content blocks or linked content from existing dashboards. This block is ideal for creating interactive, vibrant analytics pages, custom landing pages, or data input dashboards. It is designed to be used with the many embedded content block available in the content library. You can mix and match content on a single page or build a scrollable newsfeed-style dashboard, providing flexibility for a wide range of use cases.

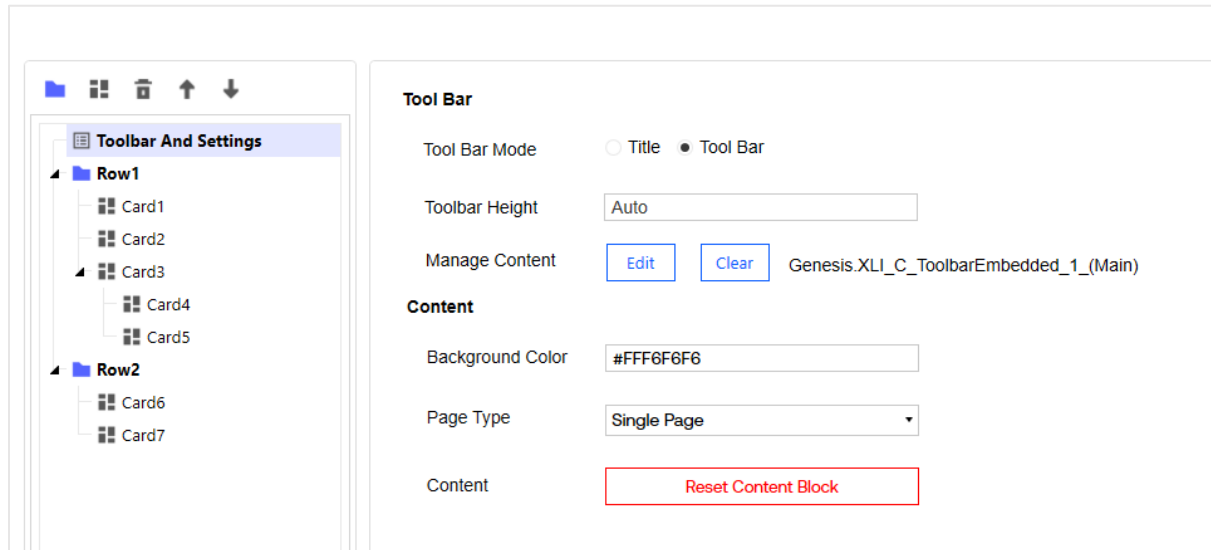


Designer Page (Configuration)

After injecting the block, use the Designer page to configure it.

Toolbar & Settings

These properties define appearance and functionality of a designated toolbar area at the top of your dashboard.

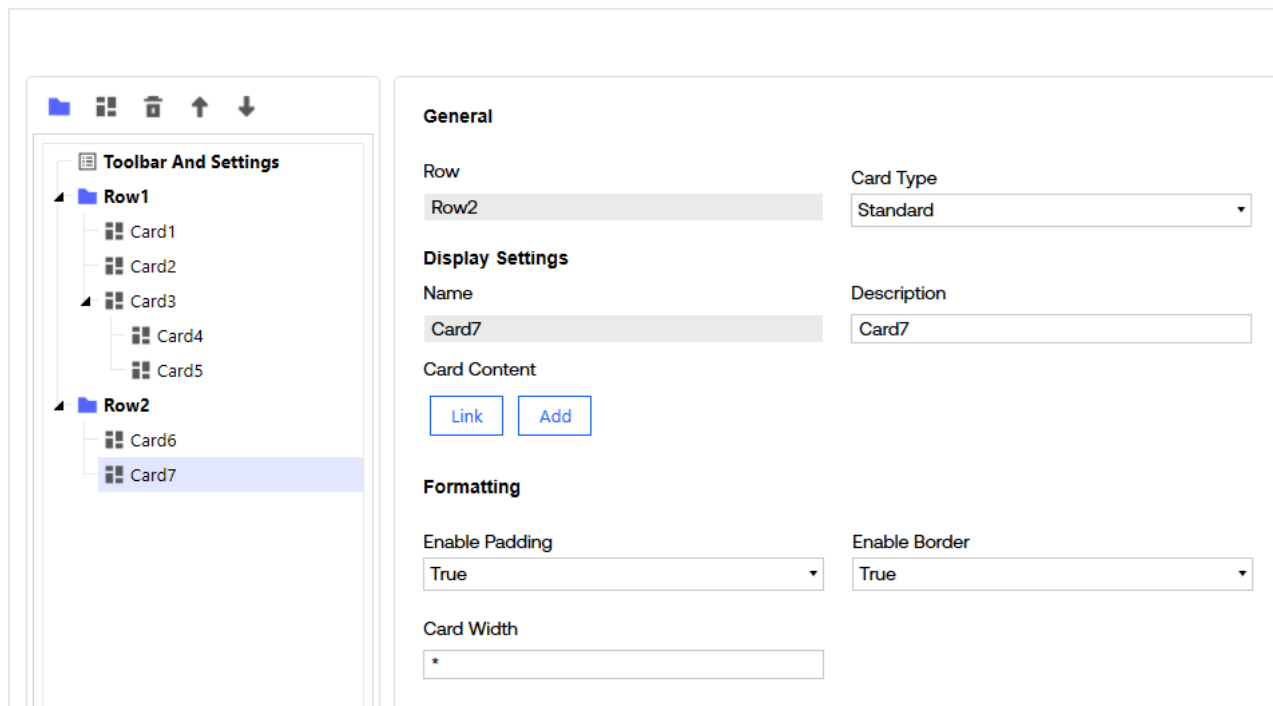


- **Toolbar Mode**
 - Select *Title* to display a simple header with only the title, or choose *Toolbar* to inject a toolbar block, which can be configured to also include filters and buttons.
- **Toolbar Height**
 - Specify a fixed height in pixels, or select Auto to let the system adjust the height dynamically based on content.
- **Background Color**
 - Default background color is gray (recommended for consistency with toolbar blocks). To customize, enter a hex color in the format #FFxxxxxx or use one of the standard OneStream color names.
- **Page Type**
 - Choose between a single-page canvas or a scrollable newsfeed-style dashboard.
- **Reset Content Block**
 - Use the reset option to revert the block to its default settings

Row and Card Management

Use rows and cards to create a grid-style layout that organizes your content into structured sections.

- Add up to 12 rows using the blue folder icon.
- Each row can contain up to 12 parent cards.
- Each parent card can have up to 12 child cards.
- Standard cards fill the row horizontally; parent cards allow vertical stacking of child cards for flexible layouts.



A. Card Configuration

- **Card Types**
 - Standard Card: Fills row horizontally.
 - Parent Card: Allows vertical stacking of child cards.
- **Card Properties**
 - Set card width and height.
 - Add a description.
 - Add a content block (recommended: use only embedded blocks from the Genesis Content Library; Q View Charts and Q View Basic also work).
- **Formatting**
 - Enable padding for a margin around content.
 - Enable or disable borders (recommended: disable border for Q Views, as they have their own border).

B. Display Modes

- **Designer Only**
 - For large analytics dashboards, use Designer Only mode to avoid re-rendering with every change.
- **Designer with Preview**
 - Allows simultaneous editing and previewing of content.

C. Editing & Organization

- **Reordering**
 - Reorder cards within rows or parent cards.
 - Reorder rows.
- **Deleting**
 - Delete cards and rows as needed.
- **Content Management**
 - Add content blocks or link to existing dashboards.
 - Remove content by clearing (disconnects block from card) or permanently deleting.

Release Notes

Version 2.0.0

This major release introduces block upgradeability further strengthening content development and management. This capability is foundational to how Genesis content will evolve going forward.

Important Notes

Upgradeability is only available for blocks running version 2.0.0 or later. Existing blocks on version 1.x must be migrated to 2.0.0 first. This is a one-time process. See *Content Block Upgrade Path* below for migration details.

Enhancements

Block Upgradeability

This block has been updated to fully support the new upgradeability framework introduced in Genesis 2.0.0. This ensures that the block can evolve over time without requiring pages to be rebuilt or configurations to be recreated.

The following capabilities are now available for all blocks at version 2.0.0 and above:

1. **Version Awareness**

Blocks now report their version and indicate when a newer version is available. Administrators can see at a glance which pages are running older versions.

2. **Compatibility Validation**

Each block now includes version-to-version compatibility rules. During an upgrade, Genesis automatically checks whether content and configuration can be safely migrated.

3. **Selective Upgrades**

Identify and select specific blocks to upgrade on specific pages.

4. **Configuration and Content Preservation**

Upgrades carry forward existing filter settings, parameters, and layout configuration. Pages do not need to be rebuilt.

Important Note: This feature is not retroactive. Blocks on version 1.x do not include the upgradeability framework. They must be migrated to 2.0.0 first. See *Content Block Upgrade Path* below for migration details.

Enhanced Block Lineage

Layout blocks now display all injected blocks in a parent/child hierarchy making it easier to identify the relationship between the content you have and where it's being used.

Known Issues

- Scrollable pages may have issues with BI Viewer Pie Charts in platform version 9.1.

Platform and Genesis Compatibility

Genesis Version Requirement

Blocks at version 2.0.0 are only compatible with Genesis 2.0 or later.

Do not inject a 2.0.0 block into a Genesis 1.x Instance. The block will not function, and the upgradeability features will not be available.

Minimum Platform Version	9.0.0
Minimum Genesis Version	2.0.0

Content Block Upgrade Path

One-time Migration: Moving an Existing Block to Version 2.0

This process applies only to blocks currently on version 1.x. Follow these steps once to bring your existing block up to version 2.0.

After completing this migration, future upgrades can be performed directly within Genesis and will not require content re-building.

1. Create a new page and set its visibility to Hidden.
2. Inject and configure the 2.0.0 version of the block on this page.
3. Verify functionality to ensure the block behaves as expected.
4. Hide the original page and make the new page visible.
5. After end-user confirmation, delete the original block and page.

Why is this still required for 2.0?

Block upgradeability is functionality built into the 2.0.0 block itself. Blocks on version 1.x do not include this functionality and therefore cannot be upgraded in place. The steps above are the final time you will need to follow this process for this block.

Upgrading from 2.0.0 to Future Versions

Once a block is running version 2.0.0 or later, upgrades are handled directly within Genesis. No page rebuilding or reconfiguration is required.

Refer to the [Genesis Guide](#) for more details on the block upgrade process.

Version 1.1.0

This release focuses on improving the visual integrity and parameter-driven interactions within Advanced Dashboard Layouts.

Fixed Issues

- **Card Border Rendering**
Resolved an issue where enabling Border Line and Padding on caused the background color to bleed into the card content area. This was especially noticeable with darker backgrounds.
- **Parameter Synchronization**
Resolved an issue where when multiple blocks are configured to share parameters via a Toolbar Embedded block, filters displayed correctly in the toolbar but triggered an unexpected platform dialog for parameter selection.

Known Issues

- Scrollable pages may have issues with BI Viewer Pie Charts in platform version 9.1.

Version 1.0.0

This is the initial release of the block.

Known Issues

- Scrollable pages may have issues with BI Viewer Pie Charts in platform version 9.1.

Platform and Genesis Compatibility

- Minimum Platform Version: 9.0.0
- Minimum Genesis Version: 1.0.0